

環
境

Environment



未来をつつむ

京都は千年に渡り、文化を紡ぎ、環境と調和することで持続してきた類まれなる地。

なぜ？ そして未来につなぐには？

未来に残していきたい大切なものをふろしきでつつむ展示やEXPO KYOTO超SDGsみらいラボでの

京都府全域の専門家やユースとの対話を通じて、その問いに対してみなさまと一緒に考える場になればと思います。

Wrapping the future.

Kyoto stands as a truly exceptional place, a city that has cultivated its culture and thrived in harmony with its environment for over a thousand years. Why has it endured? And how can we ensure its continuity for future generations?

We hope to create a space for everyone to ponder that question together, through our exhibition of furoshiki wrapping the treasures we wish to pass on to the future, and through dialogues with experts and youth from all over Kyoto Prefecture at the EXPO KYOTO Super SDGs Future Lab.

- 1 「KYOTO地球環境の殿堂」運営協議会
The Earth Hall of Fame KYOTO Management Council
宮井株式会社(京都織物卸商業組合 京都ふろしき会)
MIYAI Co., Ltd. [Kyoto Textile Wholesalers Association, Kyoto Furoshiki kai]
- 2 京都産業大学 鈴木康久研究室
Kyoto Sangyo University Prof. SUZUKI Michihisa's Lab
ふろしき研究会
Furoshiki Study Group
- 3 総合地球環境学研究所
Research Institute for Humanity and Nature
Sustai-N-able(SusN)プロジェクト 代表:林健太郎
Sustai-N-able [SusN] project Leader: Prof. HAYASHI Kentaro
- 4 株式会社リコー
Ricoh Company, Ltd.
- 5 三洋化成工業株式会社
Sanyo Chemical Industries, Ltd.
- 6 京北銘木生産協同組合
Keihoku Fine Wood Production Cooperative
京都市産業観光局農林振興室
Kyoto City Industry and Tourism Bureau, Agriculture and Forestry Office
- 7 大和リース株式会社 京都支店
Daiwa Lease Co., Ltd. Kyoto Branch
京組子製作協力:株式会社村山木工
Kyo Kumiko : MURAYAMA MOKKO Ltd.
- 8 京都里山SDGsラボ「ことす」プラ・スクール
Kyoto Satoyama SDGs Lab "Kotos", Pla-School
総合地球環境学研究所 浅利美鈴研究チーム
Research Institute for Humanity and Nature ASARI Misuzu's research team
- 9 京都府 亀岡市
Kameoka city, Kyoto prefecture
合同会社Pens and Needles
Pens and Needles
株式会社HOZUBAG
HOZUBAG
- 10 サンコール株式会社
SUNCALL CORPORATION
技術的助言 宮井株式会社(京都織物卸商業組合 京都ふろしき会)
Technical advices : MIYAI Co., Ltd.[Kyoto Textile Wholesalers Association, Kyoto Furoshiki kai]

1

From the Place of the Kyoto Protocol to the World and the Future

Exhibit

The wooden gavel that announced the adoption of the Kyoto Protocol

In 1997, the Kyoto Protocol, a global agreement to combat climate change, was adopted. This is the wooden gavel that was struck on that occasion (the actual one is on permanent display at the Kyoto International Conference Center).

Furoshiki

Biohistory Picture Scroll Furoshiki

In commemoration of the Kyoto Protocol, we have been honoring those who have made great contributions to the conservation of the global environment as the "Earth Hall of Fame KYOTO." Feel the expanse of life with the "Biohistory Picture Scroll" proposed by one of fame, Dr. NAKAMURA Keiko.



The Earth Hall of Fame KYOTO Management Council

85-3 Yabunouchi-cho, Shimochoja-machi-dori, Shinmachi-nishi-iru, Kamigyo-ku, Kyoto-City
Kyoto Prefecture, Carbon-Free Society Promotion Division



MIYAI Co., Ltd. (Kyoto Textile Wholesalers Association, Kyoto Furoshiki kai)

609 Takatsuji-cho, Takatsuji-sagaru, Muromachi-dori, Shimogyo-ku, Kyoto-City

2

Kappa, a Representation of the Water God of Kyoto

Exhibit

Water God of Kyoto

In "Kyoto, the City of Water," water gods such as "Okami no Kami" at Kifune Shrine and "Zennyō Ryū" at Shinsen-en are enshrined. We have tried to express various water gods as kappa in the form of Maitreya Bodhisattva. Kappa are both water monsters and gods. Please enjoy the mysterious world.

Furoshiki

Furoshiki Shrines associated with Water

There are so many patterns related to water. Flowing water, waves, clouds, etc. Apparently, they were made into patterns in the Asuka and Nara periods. Water is a blessing for human life, but it can also be feared at times. Perhaps people entrusted their wishes and prayers to water in the form of patterns.



Kyoto Sangyo University Prof. SUZUKI Michihisa's Lab
Building 6, Kamigamo-Motoyama, Kita-ku, Kyoto-City



Furoshiki Study Group
10-3-203 Murasakinomiya-higashi-cho, Kita-ku, Kyoto-City

3

Knowing Contentment: Food in Kyoto

Exhibit

Choosing Food that Nurtures Both Planetary and Human Health

A traditional Ohitsu, "I learn only to be contented", filled with seasonal ingredients from Kyoto is a local example of the planetary health diet that embodies the spirit of knowing contentment.

※"I learn only to be contented" is a phrase that conveys the happiness of being content with what you have, without being swept away by desires that seek to grow endlessly.

※Planetary Health Diet: The world's first scientifically based guidelines that present all humanity with the ideal form of diet and food systems and solutions for them.

Furoshiki

Nitrogen and Food Trivia

Nitrogen, found in protein, is an essential nutrient for food production. But when it leaks into the environment, it becomes a pollutant. Understanding the impact of different ingredients can help us choose diets that are better for both the planet and our health.



Research Institute for Humanity and Nature
Sustain-N-able (SusN) project Leader: Prof. HAYASHI Kentaro
457-4 Kamigamo-motoyama, Kita-ku, Kyoto-City

4

"Comet Circle", the Pride of the World

Exhibit

Resources circulation according to materials

Carefully selected reused copy machine parts and recycled materials are lined up to maximize resource recycling and minimize environmental impact. Inspired by the Japanese culture of sushi and Japanese cuisine, which values Japanese craftsmanship and ingredients, the parts and materials are likened to sushi toppings, expressing the importance of resource recycling.

Concept

"Comet circle" since 1994

In order to realize a circular-oriented society, Ricoh values the "Comet Circle," a basic concept for the collection, reuse, and recycling of products and parts, and is working on resource circulation. End-of-use materials are also valuable resources for us.



Ricoh Company, Ltd.

3-6, Nakamagome 1-chome, Ohta-ku, Tokyo-City



What is our
"comet circle"

5

Chemicals in Everyday Life

Exhibit

The Sculpture that imagines the “Future”

“Create innovations beyond the boundaries of chemistry through the power of chemistry.” This sculpture, inspired by a molecular model, represents the future that Sanyo Chemical envisions. Please look forward to the continued success of the power of chemistry!

Furoshiki

Furoshiki depicting the “Present”

Chemicals quietly yet consistently play vital roles in many aspects of our lives, enriching our everyday life. The items illustrated on this furoshiki represent just a few of the various roles. Let's search for chemicals around you!



Sanyo Chemical Industries, Ltd.

11-1, Ikkyo Nomoto-cho, Higashiyama-ku, Kyoto-City

6

A Table of Locally Produced Wood that tells the Story of Kyoto

Exhibit

A Kyoto Table that Creates Rich Dialogue

A table made of wood from Kyoto Prefecture will create a rich dialogue with you. The table top is made of compressed Kitayama natural squeezed logs in Keihoku, and features a unique pattern. On top of that, natural wood is elaborately decorated, giving a glimpse into the topography of Kyoto Prefecture.

Concept

Forests that Protect a Rich culture and the Natural Environment

When the capital was moved to Heian-kyo, the "Kyoto Kitayama and Keihoku areas" supplied timber for the construction of Heian-kyo as the Misoma Goryochi (imperial estate). Forestry techniques have been passed down continuously for a long time. Forests also play an important role in preserving the natural environment. Let's protect the future of Kyoto by using these forests wisely and carefully.



Keihoku Fine Wood Production Cooperative

6-2 Takinomukai, Keihoku Hosono-cho, Ukyo-ku, Kyoto-City



Kyoto City Industry and Tourism Bureau, Agriculture and Forestry Office

488, Kami Honnoji mae cho, Teramachi-Oike, Nakagyo-ku, Kyoto-City

7

"Bionest" - A Cycle of Life Connecting Cities and Nature

Exhibit

What is "Bionest"

Pruned branches in the park are turned into natural compost on the spot. Over time, they will return to nature and support the cycle of life. The name comes from the Greek words "BIOS" meaning life and "NEST", meaning nest.

Furoshiki&Exhibit

Furoshiki and Kyo Kumiko for the Regenerated Park

The furoshiki contains one tree representing a tree that represents the Japanese archipelago, and the regenerated urban park is represented by flowers blooming from the tree branches. Furoshiki encapsulates tradition and the future. Kyo Kumiko weaves traditional techniques and sentiment. Bionest fosters the coexistence of cities and nature. Protect the global environment and pass it on to the next generation, with that wish in mind.



Daiwa Lease Co., Ltd. Kyoto Branch

Daiwa House Kyoto Building 3rd floor, 316 Takeda Jobodaiin-cho, Fushimi-ku, Kyoto-City



Kyo Kumiko : MURAYAMA MOKKO Ltd.

20 Kamenokoh, Keihoku higae-cho, Ukyo-ku, Kyoto-City

8

Let's Feel like Plastic

Exhibit

A School where You can Meet Plastic Ghosts

Is plastic the bad guy? No, the way we use is bad.

Plastic has become a social problem due to marine littering and other reasons. However, we cannot live without plastic products these days. So, in order to prevent plastic from becoming waste and use it as a valuable resource, a school called "Pla-School" was opened in an abandoned school "Former Keihoku dai-ichi elementary school" where you can learn all about plastic. You can also meet plastic ghosts.

Furoshiki

Plastic Feelings Game

When we are reborn as plastic, where and how are we sold, who uses us, and how are we recycled? This interactive board game is sure to get everyone excited! The special furoshiki cloth made from recycled PET bottles has QR codes that let you get information about the material and the environment.



Kyoto Satoyama SDGs Lab "Kotos", Pla-School

Former First Keihoku Elementary School, Keihoku Shuzan, Ukyo-ku, Kyoto-City



Research Institute for Humanity and Nature

ASARI Misuzu's research team

457-4457-4 Kamigamo-motoyama, Kita-ku, Kyoto-City

9

Kameoka: a World-Class Ecological City

Concept Spreading the Kameoka Style with "Environment x Art"

Kameoka City is aiming to become a city with zero plastic waste. It is full of mechanisms to expand the circle of activities through collaboration with art and play.

Exhibit Ayumamo Cards

The Ayumodoki is an endangered species and a national natural monument. The "Ayumamo (Let's Protect Ayumodoki!) Card Game" was created with the hope that by learning and thinking about the Ayumodoki through play, people will be able to feel closer to environmental issues.

Furoshiki HOZUBAG・FLAG FUROSHIKI

"HOZUBAG" is one of the representative efforts of Kameoka city's "Plastic Waste Zero Declaration". Paragliders that have outlived their usefulness are upcycled into bags. Furoshiki "FLAG FUROSHIKI" is also popular.



Kameoka city, Kyoto prefecture
Yasumachi Nonogami 8, Kameoka-City



Pens and Needles
Gebano-cho 1-1,
Saga hirosawa minami, Ukyo-ku, Kyoto-City



HOZUBAG
Kawaramachi 3, Kameoka-City

10

The techniques and thoughts behind the black color of bamboo charcoal

Exhibit

A Bright and Lively Future Princess Kaguya

Utilizing the technical capabilities we have built up over the years in creating precision products, we are producing bamboo charcoal, "Kyoto Kaguya charcoal," in an eco-friendly manner to solve the problem of bamboo damage in Miyazu City, Kyoto Prefecture. This figure was made from biodegradable plastic and vegan leather that uses Kyoto Kaguya charcoal. It is based on the image of a future Princess Kaguya, full of beauty and strength.

Bamboo damage: Bamboo has a strong growth spurt, so if bamboo forests are not managed, they will continue to spread. If humans do not manage them, biodiversity and forest water retention capacity will decrease, and the risk of landslides and collapses will increase, which is a problem all over Japan.

Furoshiki

Bamboo charcoal furoshiki that creates a "black" look

Several pieces have been created using Kyoto Kaguya charcoal, from a grey color that reproduces the ancient technique of ink dyeing using glue, to a nearly jet black color created using modern technology. They appeal to the importance of tradition, evolution, and passing on to the future.



SUNCALL CORPORATION

14, Umezunishiura-cho, Ukyo-ku, Kyoto-City



Technical advices : MIYAI Co., Ltd.

(Kyoto Textile Wholesalers Association, Kyoto Furoshiki kai)

609 Takatsuji-cho, Takatsuji-sagaru, Muromachi-dori, Shimogyo-ku, Kyoto-City

A Spatial Design Covered in Kyo-Kawara “Kimono Tiles” & Featuring Non-Verbal Expression through Images and Music

This experience enables visitors to deeply engage with Kyoto’s future and past through a minimalist and serene environment unified by original Kyo-Kawara “Kimono Tiles.”

Non-verbal images and audio are also integrated in harmony with the environment, expressing its multifaceted appeal.



Video introduction



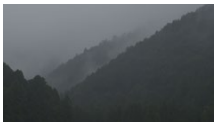
Dry Landscape Gardens

Location: Tofukuji Temple, Honbo Garden,
Hasso Garden, Minami Garden
(Higashiyama-ku, Kyoto-City)
Cooperator: Daihonzan Tofukuji Temple



Stream Water

Location: Miyazu-City



Rainy Mountain

Location: Nantan-City



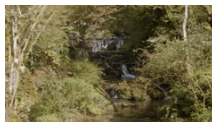
Bio Plant

Location: Kyoto Satoyama SDGs Plant Meguru
(Ukyo-ku, Kyoto-City)
Cooperator: Kyoto Satoyama SDGs Plant Meguru



Koto Falls

Location: Kyotamba-cho, Funai-gun



Kibune River

Location: Sakyo-ku, Kyoto-City



Kameoka City Garbage Bags

Location: Studio



Liquid Fertilizer

Location: Kyoto Satoyama SDGs Plant Meguru
(Ukyo-ku, Kyoto-City)
Cooperator: Kyoto Satoyama SDGs Plant Meguru

Video introduction



Kamigamo Shrine Nara-no-Ogawa Stream

Location: Kamo Wakeikazuchi Jinja
(Kamigamo Jinja) (Kita-ku, Kyoto-City)
Cooperator: Kamo Wakeikazuchi Jinja
(Kamigamo Jinja)



Bamboo Charcoal

Location: Studio



Rice Plants

Location: Yawata-City



Rope-making

Location: Miyama-cho, Nantan-City (Nantan-City)
Cooperator: Miyama Tourism and Community
Development Association, Nantan City



Freshly Cooked Rice

Location: Studio



Furoshiki (Wrapping Cloth)

Location: Studio
Cooperator: Yamada Sen'i Co., Ltd.



Bamboo Grove

Location: Miyazu-City



Bench Production Using Unused Timber from Forest Thinning

Location: Ace Japan Co., Ltd. (Seika-cho, Soraku-gun)
Cooperator: Ace Japan Co., Ltd.

Video introduction



Wooden Palette

Location: Ace Japan Co., Ltd. (Seika-cho)
Cooperator: Ace Japan Co., Ltd.



Uji River

Location: Near the Confluence of Three Rivers (Yawata-City)



Intersecting Expressways

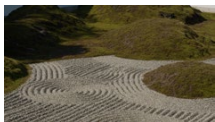
Location: Oyamazaki Junction
(Oyamazaki-cho)



Canal Illustrations

View of Both Banks of the Yodo River, Boats Headed Upriver, Lower Section

Cooperator: Mukogawa Women's University Library
(「Yodogawaryougan'ichiran Noboribunenobu」)



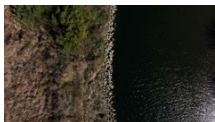
Dry Landscape Garden

Location: Tofukuji Temple, Honbo Garden,
Hasso Garden, Minami Garden
(Higashiyama-ku, Kyoto-City)
Cooperator: Daihonzan Tofukuji Temple



Where Three Rivers Converge

Location: The Confluence of Three Rivers (Yawata-City)



Katsura River

Location: Near the Confluence of Three Rivers
(Yawata-City)

The Concept of Jun'on Haikei

Jun'on Haikei is a collection of the sounds of present-day Kyoto Prefecture, in combination with sounds documented in historical records and other sources, that has been enhanced with other compositions to create a unique soundscape.

In 1996, the Ministry of the Environment (known as the Environment Agency at the time) designated the “100 Soundscapes of Japan”—a collection of sounds recognized for their particular significance in maintaining Japan’s unique acoustic environment. The Ministry accepted submissions of a broad range of environments (soundscapes) featuring sounds that communities across the country cherish as local symbols and wish to preserve for future generations. Nearly 30 years have passed since then, and it is time to revisit the sounds of Kyoto Prefecture. Today, we are witnessing the acceleration of global warming and the seasons are gradually blending together. Under these circumstances, mountains, forests, and other elements of nature are becoming more important and precious than ever. Kyoto Prefecture is blessed with a rich natural environment, where beautiful sounds can still be found. Field recordings have been made to preserve them, with the hope that no more of the environment will be lost. This collection also contains newly recorded sounds beyond those already recognized in the previously mentioned “100 Soundscapes of Japan.”

Works of literature also contain many descriptions of sounds. Before the invention of recording technology, people had been preserving sounds through verbal descriptions since ancient times. Preserving sounds through language in this way is also a form of field recording.

Field Recording List

Part-1 Rurikei stream (Nantan City) Wharf (Ine Town) Maizuru Port (Maizuru City) Miyazu Bay (Miyazu City) Iwashimizu Hachimangu Shrine (Yawata City)

Part-2 Kyoto Imperial Palace gravel (Kyoto City) Kiyomizu Temple (Kyoto City) Deer (Kyoto City) Mount Oe (Fukuchiyama City) Chirimen Kaido Tenmangu Shrine (Yosano Town)

Part-3 Kotohiki Beach (Kyotango City) Kototaki Falls (Kyotamba Town) Uji River (Uji City) Shinpukuji Temple water harp (Kameoka City) Myoshinji Temple (Taizo-in) water harp (Kyoto City)

Part-4 Ayabe-Ohashi Bridge, Yura River (Ayabe City) Minoyama Bamboo Grove (Yawata City) Koshoji Temple (Uji City) Kosei Water Park (Kameoka City) Shisendo Temple Deer Dance (Kyoto City) Gokonomiya Shrine (Kyoto City) Thunderstorm (Kyoto City)

Written Description Field Recordings List

Ohara, The Tale of the Heike: The sounds of bells, deer, and insects

Nonomiya, The Tale of Genji: The sounds of insects, wind through the pine trees, and court music instruments

Uji, Man' yoshu, two poems (1699 and 1700) composed on the Uji River: the sounds of geese and the river

Hojoji Temple, Eiga Monogatari, Vol. 17, Omugaku: Court music performances

Tango, Tango no Kuni Fudoki: Voices lamenting lost works and singing

Fukuchiyama, Oeyama Ekotoba: The sounds of thunder and ritual music

Iwashimizu Hachimangu Shrine, Noh Playwright Zeami, Yumiyawata &

Hojogawa: Mysterious music and the sounds of nighttime ritual music

Hoshoji Temple, Ben no Naishi Nikki: The sounds of sarugaku theater performances in the back of the temple and bells

Junichiro Tanizaki, Senkantei, Yume no Ukihashi: The sounds of bamboo tubes filling with water and clacking against stone

Kotohiki Beach, Kiuchi Sekitei, Unkonshi: The sounds of the sandy beach

Kagero Nikki: The sounds of carts

Rakuyo Dengakuki: The sounds of a grand ritual music performance held in the Eicho era

Composition & Arrangement: Marihiko Hara

Guitar: PolarM

Field Recording Assistance: Masumi Muranaka

Research Assistance: Rurihiko Hara

Sound Design: Raku Nakahara (KARABINERinc.)

/ Ohshiro Sound Office Inc.

Production: MHStudioInc. / TSUYURI

空間デザイン協力	Space design cooperation
Sandwich	Sandwich
京瓦タイル「キモノタイル」製作協力	Kyoto tile "Kimono tile" production cooperation
株式会社京瓦 浅田製瓦工場	ASADA KAWARA FACTORY
テーマ映像制作	Theme video production
株式会社 青空	AOZORA,LTD
テーマ音楽制作	Theme music production
原 摩利彦	Marihiko Hara

大阪・関西万博きょうと推進委員会